

Manual:Wireless AP Client

Applies to RouterOS: v3, v4



Summary

Configuration example shows how to establish simple wireless network by using MikroTik RouterOS. MikroTik RouterOS is fully compliant with IEEE802.11a/b/g/n standards, MikroTik RouterOS device ^[1] can be used as wireless access-point and wireless station (other modes ^[2] are supported too).

Configuration setup

Our basic configuration setup is

Wireless Access Point

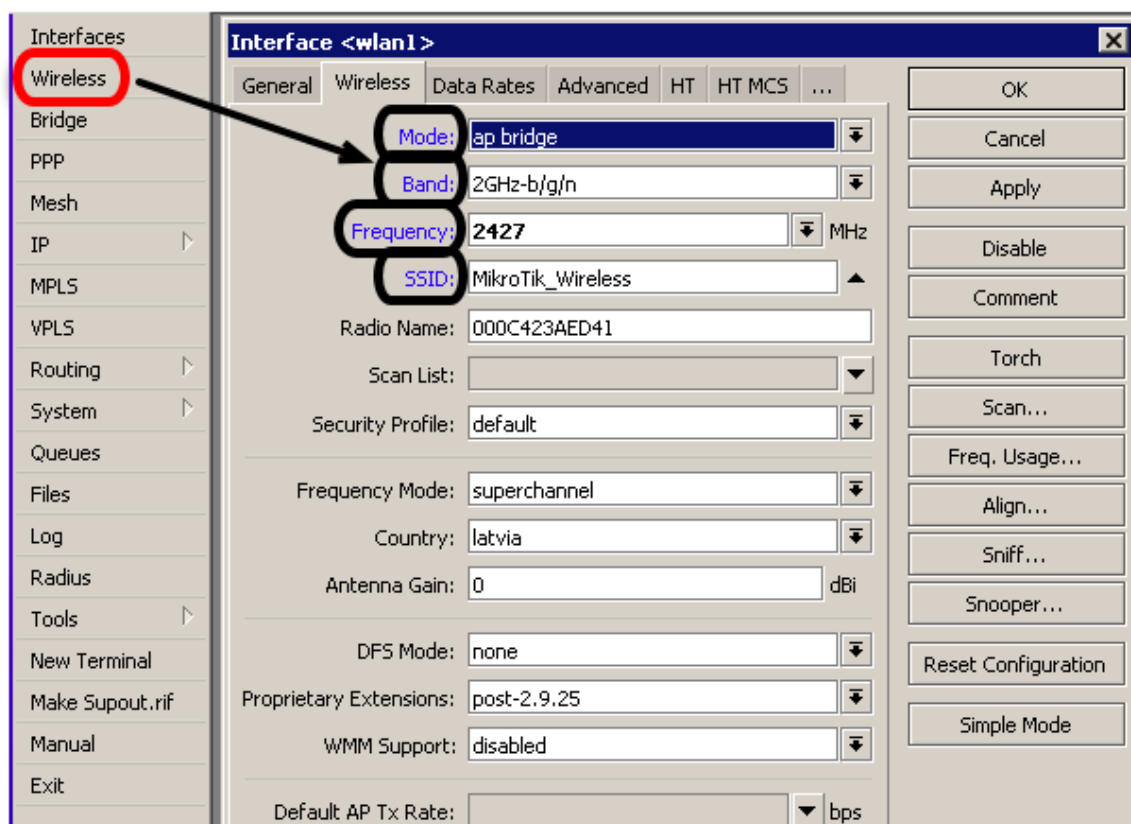


Wireless Stations



Access Point Configuration

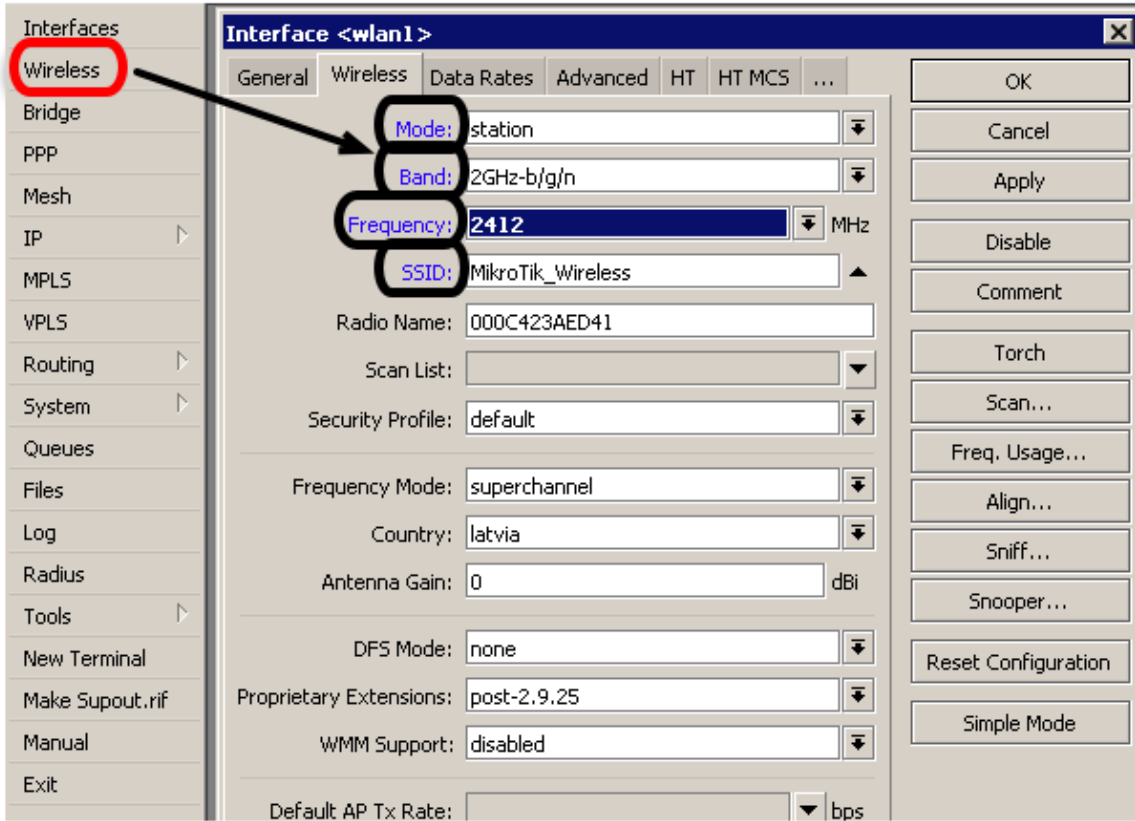
- Connect to the router via Winbox ^[3]
- Setup **Wireless** interface, necessary configuration options are **mode=ap-bridge** **band=ap_operated_band** **frequency=ap_operated_frequency** **ssid=network_identification**



- These settings are enough to establish wireless connection, additionally you need to add IP address for the wireless interface for IP routing, optionally add security and other settings.

Station Configuration

- Wireless client configuration example is for MikroTik RouterOS, other vendor OS configuration should be looked in the appropriate documentation/forum/ mailing list etc.
- Connect to the client router via the same way and proceed to the **Wireless** interface configuration.
- Necessary configuration options are **mode=station band=band_ap_operates_on ssid=ap_network_ssid**

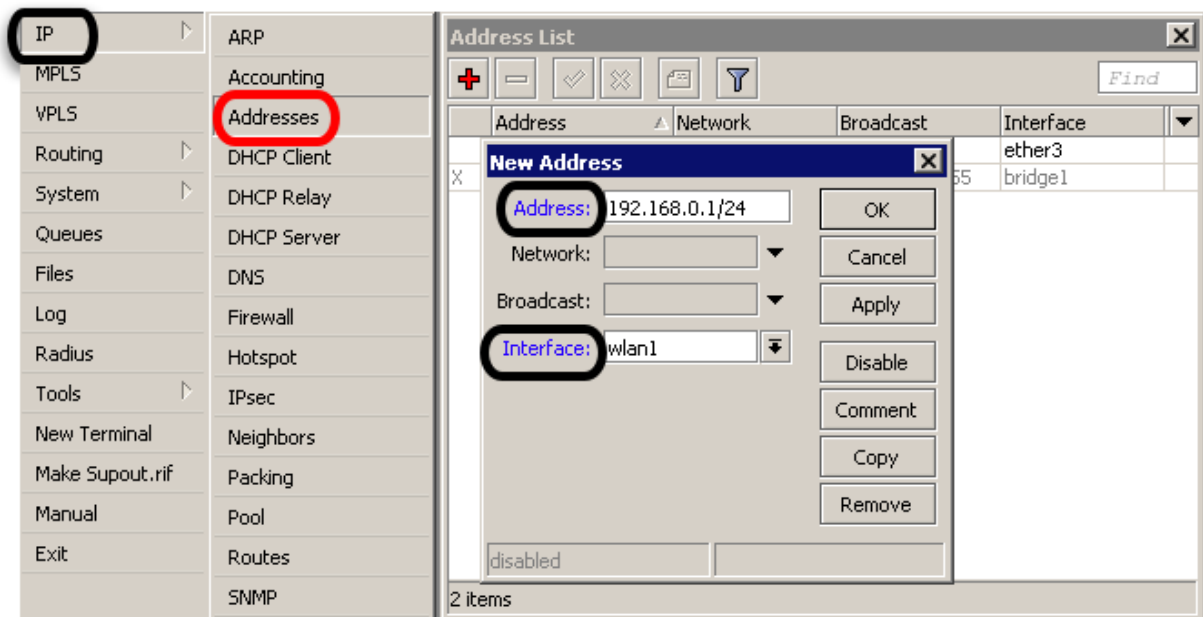


- These settings are enough to establish wireless connection, additionally you need to set IP address for the wireless interface to establish IP routing communication with access point, optionally use security and other settings.

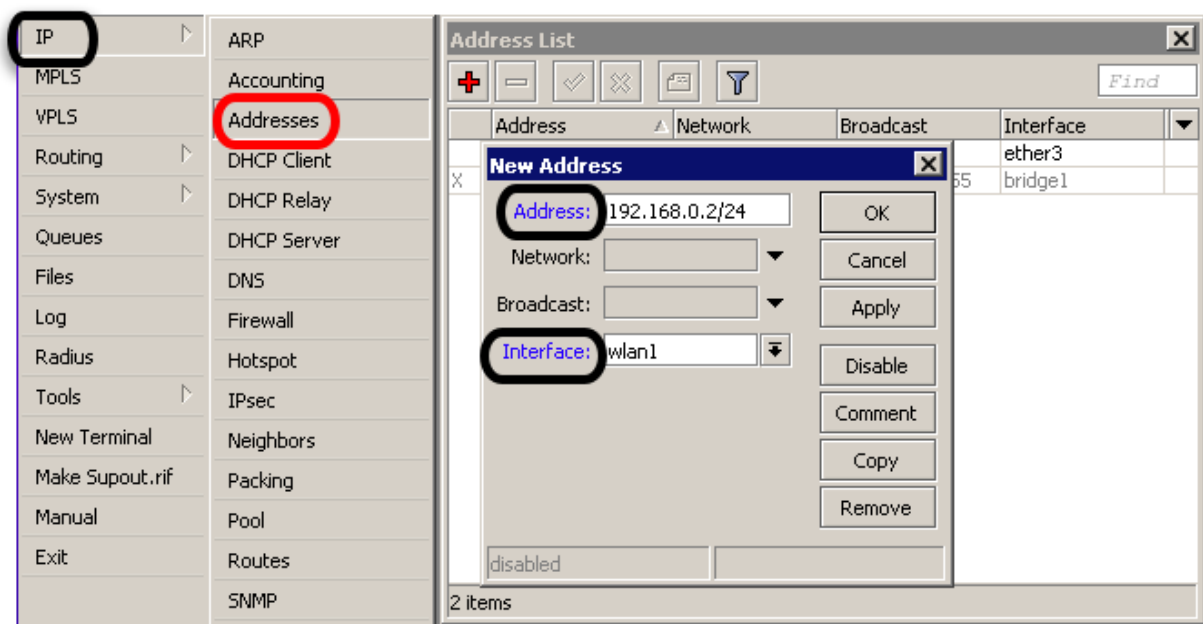
Additional Configuration

IP Configuration

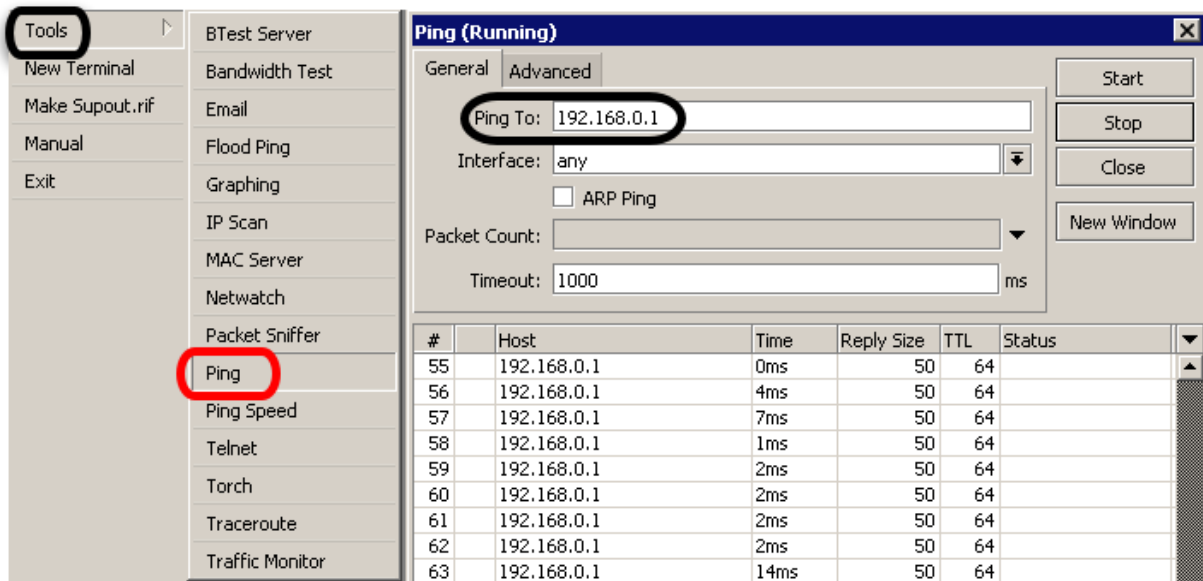
- Add IP address to Access Point router, like 192.168.0.1/24



- Add IP address to Client router, address should be from the same subnet like 192.168.0.2/24



- Check IP communication by ping from station (for example),



Additional Access Point Configuration

- All the necessary settings for the simple Access Point are showed here ^[4].
- Security profiles are used for WPA/WPA2 protection, configuration options are explained here ^[5]. Usually all wireless clients share the same security configuration as access point.
- **mode=ap-bridge** allows 2007 clients, **max-station-count** is used to limit the number of wireless client per Access Point. Wireless **mode=bridge** is used for point-to-point wireless links and allows connection for one station only.
- MikroTik RouterOS license level4 is minimum for **mode=ap-bridge**
- Other wireless settings are (<http://wiki.mikrotik.com/wiki/Category:Wireless> explained here)

Additional Station Configuration

- Station adapts to wireless access point frequency, despite of the frequency configuration in Wireless menu. Station uses **scan-list** to select available Access Point, when superchannel mode is used on wireless Access Point, set custom Access Point frequency to **mode=station scan-list**.

References

- [1] <http://routerboard.com/>
- [2] http://wiki.mikrotik.com/wiki/Manual:Interface/Wireless#Wireless_interface_configuration
- [3] http://wiki.mikrotik.com/wiki/First_time_startup
- [4] http://wiki.mikrotik.com/wiki/Manual:Making_a_simple_wireless_AP
- [5] http://wiki.mikrotik.com/wiki/Manual:Interface/Wireless#Security_profiles

Article Sources and Contributors

Manual:Wireless AP Client *Source:* <http://wiki.mikrotik.com/index.php?oldid=20439> *Contributors:* Marisb, SergejsB

Image Sources, Licenses and Contributors

Image:Version.png *Source:* <http://wiki.mikrotik.com/index.php?title=File:Version.png> *License:* unknown *Contributors:* Normis

Image:AP_CLIENT.png *Source:* http://wiki.mikrotik.com/index.php?title=File:AP_CLIENT.png *License:* unknown *Contributors:* SergejsB

Image:ap_client2.png *Source:* http://wiki.mikrotik.com/index.php?title=File:Ap_client2.png *License:* unknown *Contributors:* SergejsB

Image:ap_client3.png *Source:* http://wiki.mikrotik.com/index.php?title=File:Ap_client3.png *License:* unknown *Contributors:* SergejsB

Image:ap_client4.png *Source:* http://wiki.mikrotik.com/index.php?title=File:Ap_client4.png *License:* unknown *Contributors:* SergejsB

Image:ap_client5.png *Source:* http://wiki.mikrotik.com/index.php?title=File:Ap_client5.png *License:* unknown *Contributors:* SergejsB

Image:ap_client6.png *Source:* http://wiki.mikrotik.com/index.php?title=File:Ap_client6.png *License:* unknown *Contributors:* SergejsB